



## The Bridge, Stow Bridge, PE34 3PQ

Rent - £1,215 Per Month      Deposit - £1,401

A fully refurbished flat finished to a high standard, located within an HMO-style building at Crown House, Stow Bridge.

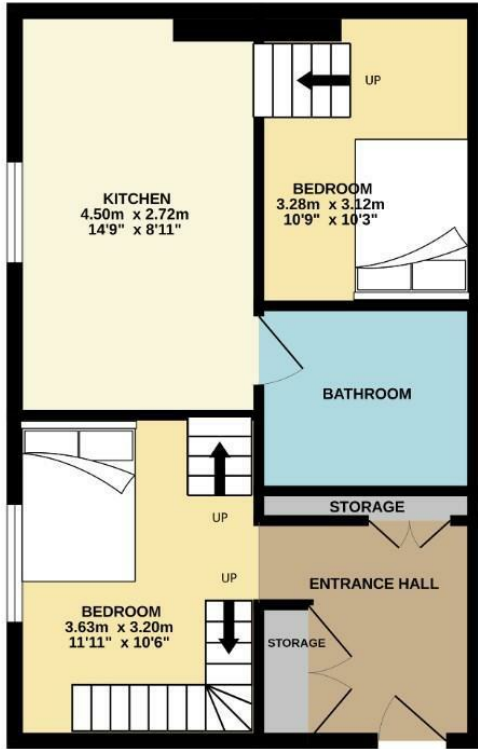
The property offers two well-proportioned bedrooms, a modern fitted bathroom, and a spacious open-plan kitchen and dining area, creating a bright and practical living space. The layout is ideal for tenants looking for comfortable, contemporary accommodation with plenty of flexibility.

- FULLY REFURBISHED, HIGH STANDARD FLAT
- TWO BEDROOMS WITH PRACTICAL PULL-OUT BEDS
- MODERN FITTED SHOWER ROOM
- BEAUTIFUL RIVER VIEWS
- COUNCIL TAX BAND - F
- UTILITIES INCLUDED (EXCLUDING ELECTRICITY)
- SPACIOUS OPEN-PLAN KITCHEN AND DINING AREA
- SECOND-FLOOR SPACE
- EPC RATING - B
- EARLY VIEWING ADVISED

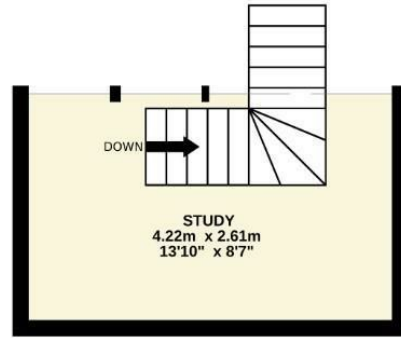


Council Tax Band: F - EPC Rating: null

GROUND FLOOR  
41.2 sq.m. (443 sq.ft.) approx.



1ST FLOOR  
11.0 sq.m. (118 sq.ft.) approx.



TOTAL FLOOR AREA : 52.2 sq.m. (562 sq.ft.) approx.

Whilst every attempt has been made to ensure the accuracy of the floorplan contained here, measurements of doors, windows, rooms and any other items are approximate and no responsibility is taken for any error, omission or mis-statement. This plan is for illustrative purposes only and should be used as such by any prospective purchaser. The services, systems and appliances shown have not been tested and no guarantee as to their operability or efficiency can be given.  
Made with Metroplan 6/2020.

